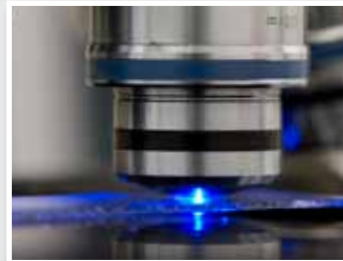


## 5kW high dynamic power supply

for harsh industrial applications e.g. laser, welding, automation



rear view

High dynamic switchmode Power Supply

- **Input voltage:**  
3 x 360 - 528V AC  
or 480 - 750V DC  
unit switches off at under-/ over voltage & phase loss
- **Output voltage & current:** programmable  
30 ... up to 90V, 65Amps
- **Frequency:** AC-Version: 50/60Hz  
or DC-Version
- **Output power:** up to 5.8kW

Applications

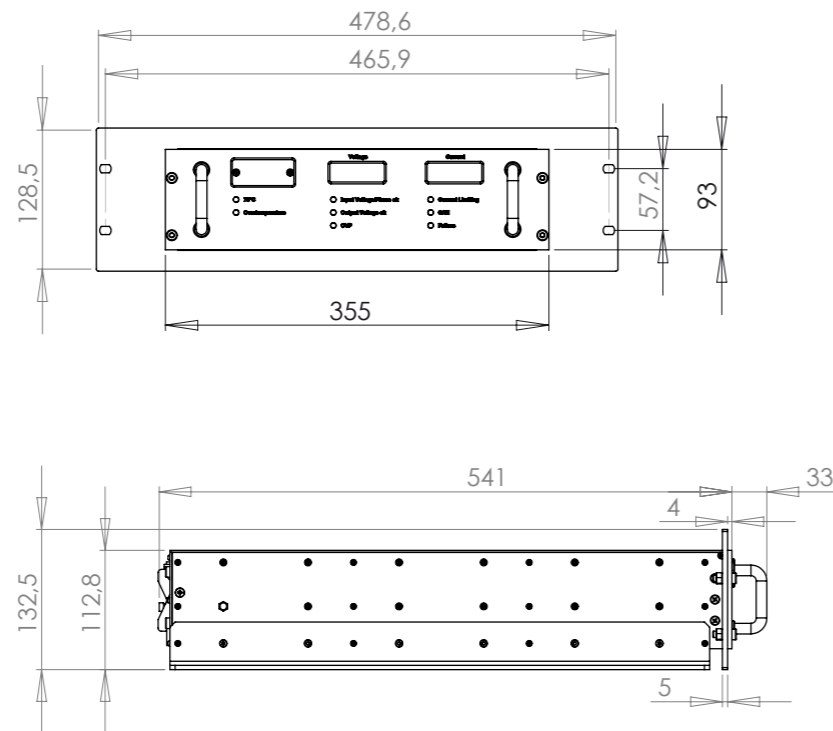
- Laser industry: pulse or injection locked lasers
- Welding industry: Micro electronic beam-, seam- & spot welding
- Industrial automation: cutting or drilling processes
- Radar systems



Features

- Outstanding pulse power
- wide input voltage range
- Maintenance free water cooled solution with at least 0.5g/pm or more
- Efficiency at full load: 90% typical
- Switching frequency: approx. 30kHz
- Isolation resistance: > 10MΩ at 500V DC
- High power density
- Hermetically sealed enclosure; protection category IP54 / NEMA 5 for harsh environment
- Emission acc. to EN 55011: 2009 + A1: 2010 + A2: 2001 group 1 class A
- Immunity acc. to EN 61000-6-2: 2005
- Safety / Construction acc. to EN 60950, class 1
- Operating temperature: -20°C to +50°C
- Free mounting position in all 3 axes
- Weight: 22kg

Dimensions incl. 19" mounting kit (optional)



Specifications

Input	
Input voltage	3 x 360 - 528V AC, unit switches off at under-/ over voltage & phase loss
Frequency	AC-Version: 50/60Hz or DC-Version
Recommended input fuses	3 x 16A slow, external
Inrush current	limiting by thyristor softstart

Output	
Output voltage & current	30...80V/ 65A@U <sub>in</sub> = 400V AC ±10% 30...83V/ 65A@U <sub>in</sub> = 415V AC ±10% 30...88V/ 65A@U <sub>in</sub> = 440V AC ±10% 30...90V/ 65A@U <sub>in</sub> = 480V AC ±10% 30...80V/ 65A@U <sub>in</sub> = 480...750V DC 30...90V/ 65A@U <sub>in</sub> = 580...750V DC
Load & line regulation	0.2% max.
Load transient (0-100-0%)	1.5V max.
Overvoltage protection	OVP switches off module with automatic return to operation OVP adjusted to 110% of adjusted voltage programming value
Connector	X2, HAN-Modular

- Option**
- 19" mounting kit

Crowbar	
Crowbar resistor	2x22Ω
Discharge time	Depending on external capacitance
Maximum internal output capacitance	approx. 26mF nominal
Function	Any internal switch off event activates the crowbar internally. The crowbar resistor can be also activated by an external connection.
Connector	SACC-MI2MR-4SC M Supplier: PHOENIX CONTACT

- Interfaces**
- CAN Bus
  - Control LEDs
  - Display LEDs (operation & diagnose mode)
  - Analogue



Your solution for pulse-load applications



## **SCHAEFER, Inc.**

45 South Street, Hopkinton, MA 01748, USA

Tel: 508.435.6400

Fax: 508.435.6401

[sales@schaeferpower.com](mailto:sales@schaeferpower.com)

[www.schaeferpower.com](http://www.schaeferpower.com)